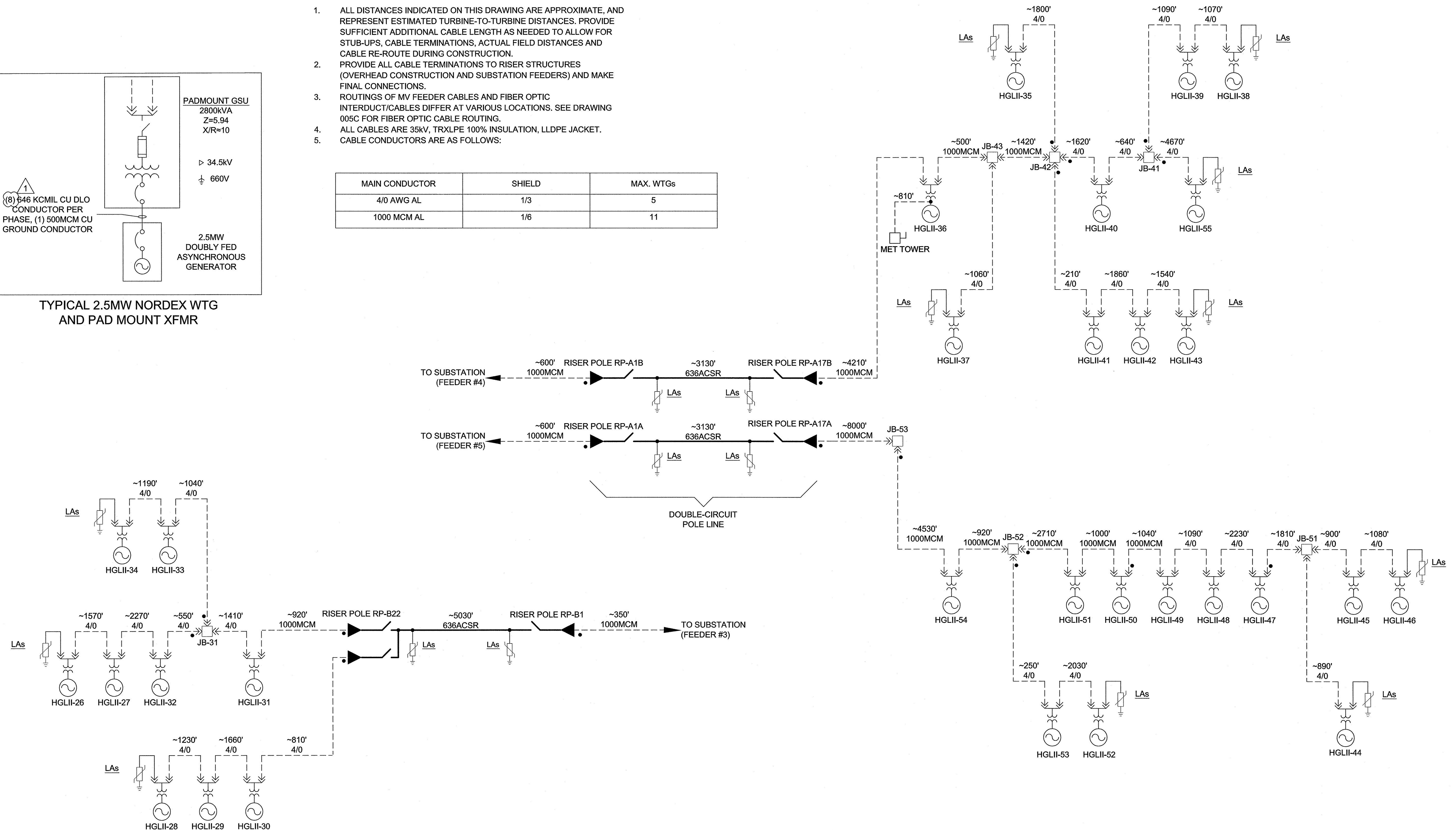


1. ALL DISTANCES INDICATED ON THIS DRAWING ARE APPROXIMATE, AND REPRESENT ESTIMATED TURBINE-TO-TURBINE DISTANCES. PROVIDE SUFFICIENT ADDITIONAL CABLE LENGTH AS NEEDED TO ALLOW FOR STUB-UPS, CABLE TERMINATIONS, ACTUAL FIELD DISTANCES AND CABLE RE-ROUTE DURING CONSTRUCTION.
2. PROVIDE ALL CABLE TERMINATIONS TO RISER STRUCTURES (OVERHEAD CONSTRUCTION AND SUBSTATION FEEDERS) AND MAKE FINAL CONNECTIONS.
3. ROUTINGS OF MV FEEDER CABLES AND FIBER OPTIC INTERDUCT/CABLES DIFFER AT VARIOUS LOCATIONS. SEE DRAWING 005C FOR FIBER OPTIC CABLE ROUTING.
4. ALL CABLES ARE 35KV, TRXLPE 100% INSULATION, LLDPE JACKET.
5. CABLE CONDUCTORS ARE AS FOLLOWS:

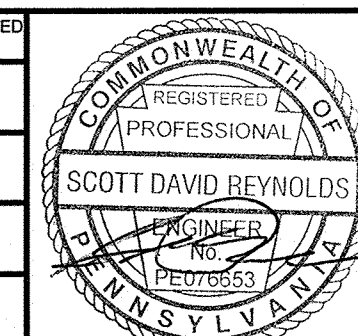
MAIN CONDUCTOR	SHIELD	MAX. WTGs
4/0 AWG AL	1/3	5
1000 MCM AL	1/6	11



PROPRIETARY INFORMATION NOTICE

CG POWER SOLUTIONS USA INC CLAIMS PROPRIETARY RIGHTS, INCLUDING FOREIGN AND DOMESTIC COPYRIGHT AND INTELLECTUAL PROPERTY RIGHTS, TO THE DESIGN, DRAWING, INFORMATION AND LAYOUT DISCLOSED HEREIN. THIS DRAWING IS ISSUED FOR ITS INTENDED PURPOSE ONLY AND MAY NOT BE REPRODUCED OR DISCLOSED TO OTHERS WITHOUT THE EXPRESS WRITTEN CONSENT OF CG POWER SOLUTIONS USA INC.

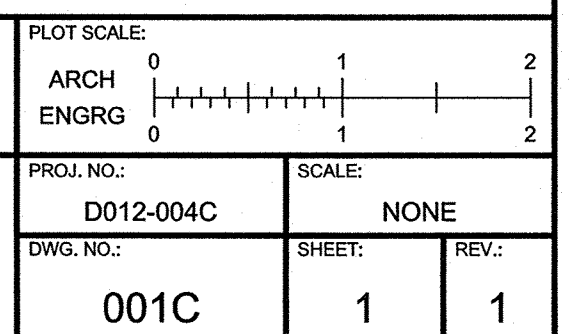
REV.:	DATE:	DESCRIPTION:	DRAWN BY:	CHECKED BY:	APPROVED BY:	REV.:	DATE:	DESCRIPTION:	DRAWN BY:	CHECKED BY:	APPROVED BY:
1	20MAY'11	REVISED PER COMMENTS	JEG	JRB	JRB	D	06APR'11	ISSUED FOR 60% REVIEW, GENERAL REVISIONS	MLS	JRG	JRE
0	16MAY'11	ISSUED FOR CONSTRUCTION	MLS	JRB	JRB	C	17MAR'11	LAYOUT & WTG NUMBERS REVISED PER CLIENT COMMENTS	BCA	MLS	JRE
F	14APR'11	REVISED PER UPDATED SITE PLAN	MLS	JRB	JRB	B	04MAR'11	ISSUED FOR 30% REVIEW, GENERAL REVISIONS	JEG	JRB	JRE
E	08APR'11	REVISED PER 30 WTG DESIGN	BCA	MLS	JRB	A	17FEB'11	FOR BIDDING PURPOSES	BCA	JRB	JRE

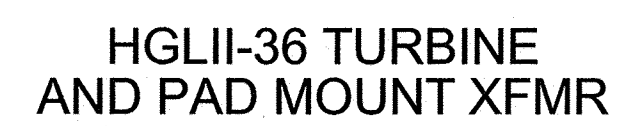


CG Power Solutions
www.cgpowersolutions.com

HIGHLAND NORTH SUBSTATION ADDITION
EVERPOWER WIND HOLDINGS, INC.

34.5kV COLLECTION SYSTEM ONE LINE DIAGRAM






1. ALL DISTANCES INDICATED ON THIS DRAWING ARE APPROXIMATE, AND REPRESENT TURBINE-TO-TURBINE DISTANCES. PROVIDE SUFFICIENT ADDITIONAL CABLE LENGTH AS NEEDED TO ALLOW FOR STUB-UPS, CABLE TERMINATIONS, ACTUAL FIELD DISTANCES AND CABLE RE-ROUTE DURING CONSTRUCTION.
2. ALL OUTDOOR ENCLOSURES SHALL BE RATED NEMA 3R.

PROPRIETARY INFORMATION NOTICE			REV.:	DATE:	DESCRIPTION:	DRAWN BY:	CHECKED BY:	APPROVED BY:	REV.:	DATE:	DESCRIPTION:	DRAWN BY:	CHECKED BY:	APPROVED BY:	
CG POWER SOLUTIONS USA INC CLAIMS PROPRIETARY RIGHTS, INCLUDING FOREIGN AND DOMESTIC COPYRIGHT AND INTELLECTUAL PROPERTY RIGHTS, TO THE DESIGN, DRAWING, INFORMATION AND LAYOUT DISCLOSED HEREIN. THIS DRAWING IS ISSUED FOR ITS INTENDED PURPOSE ONLY AND MAY NOT BE REPRODUCED OR DISCLOSED TO OTHERS WITHOUT THE EXPRESS WRITTEN CONSENT OF CG POWER SOLUTIONS USA INC. © 2011 CG POWER SOLUTIONS USA INC - ALL RIGHTS RESERVED															
DWG FILE: 001C-02.dwg 3:49pm PLOTTED: May 17, 2011 scollins									0	16MAY'11	ISSUED FOR CONSTRUCTION	MLS	JRB	JRB	

COMMONWEALTH OF PENNSYLVANIA
REGISTERED PROFESSIONAL ENGINEER
SCOTT DAVID REYNOLDS
No. 000000000
EXPIRATION DATE 12/31/2015



CG Power Solutions
www.cgpowersolutions.com

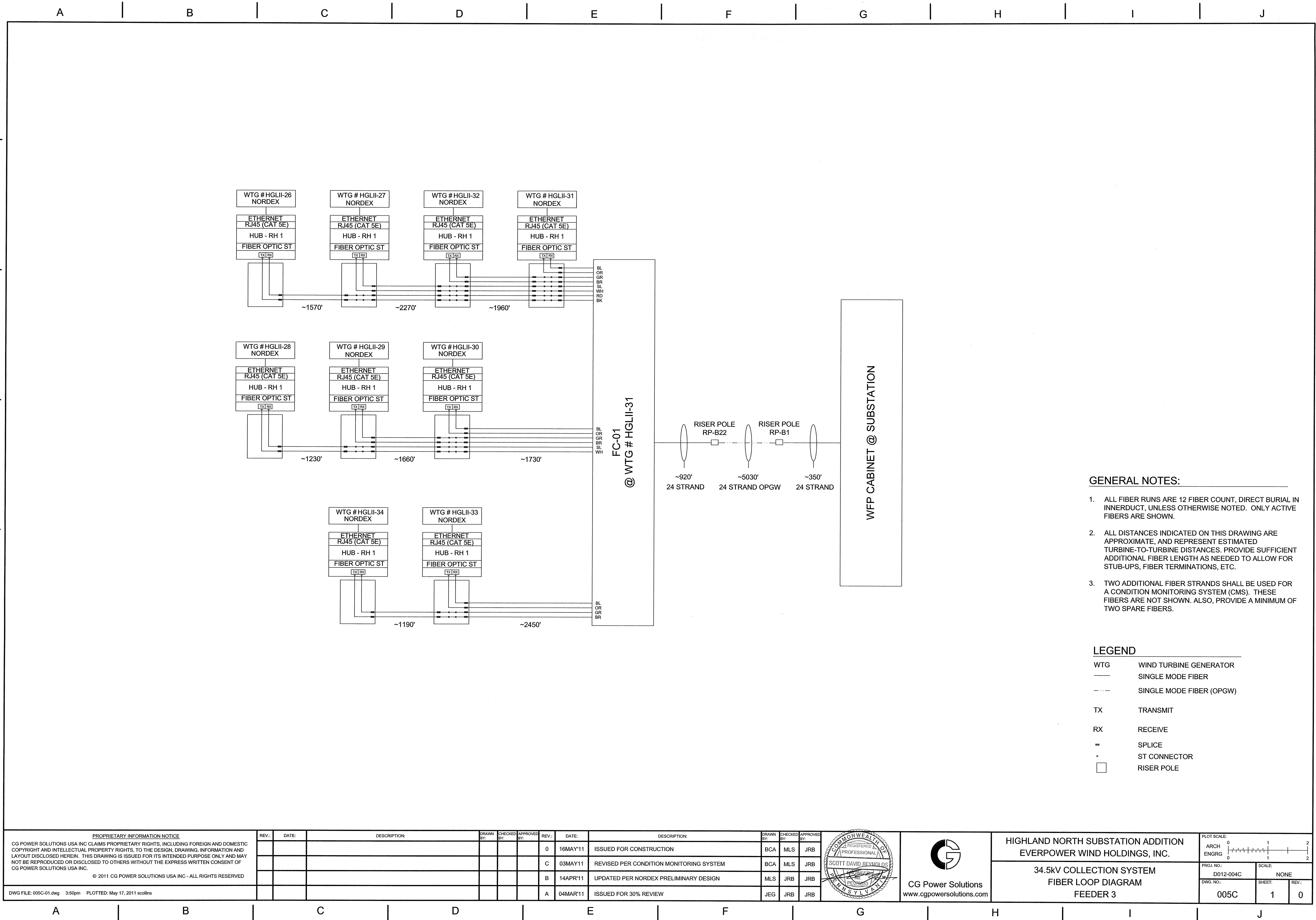
HIGHLAND NORTH SUBSTATION ADDITION
EVERPOWER WIND HOLDINGS, INC.

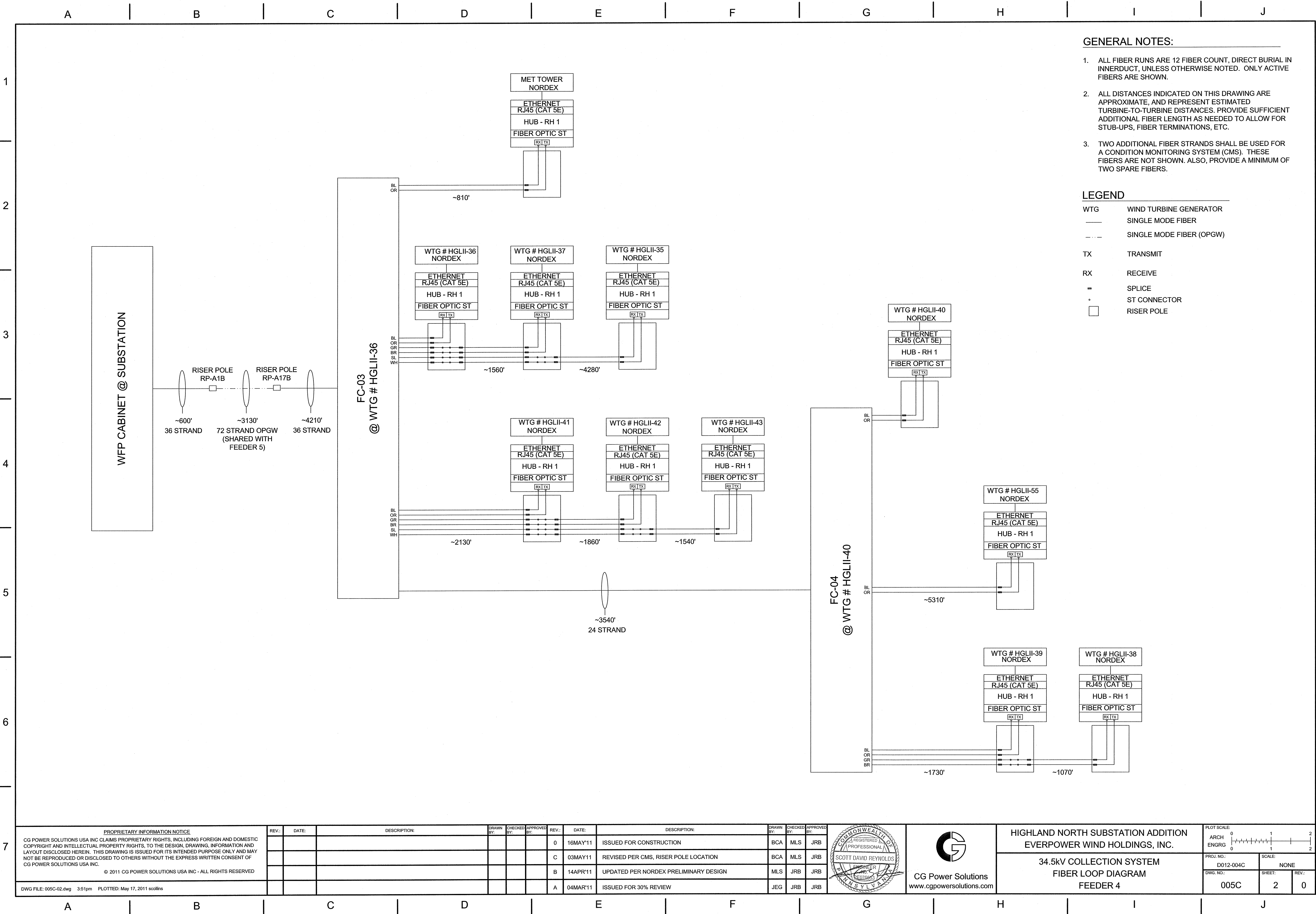
34.5kV COLLECTION SYSTEM
ONE LINE DIAGRAM
MET TOWER POWER

PLOT SCALE:
ARCH ENGRG
0 1 2
|-----|
0 1 2

PROJ. NO.:
D012-004C
SCALE:
NONE

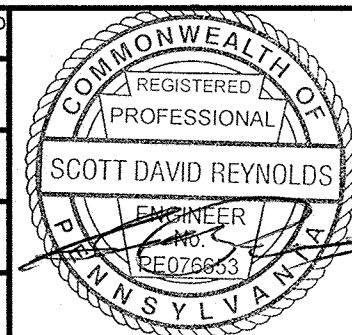
DWG. NO.:
001C
SHEET:
2
REV.:
0





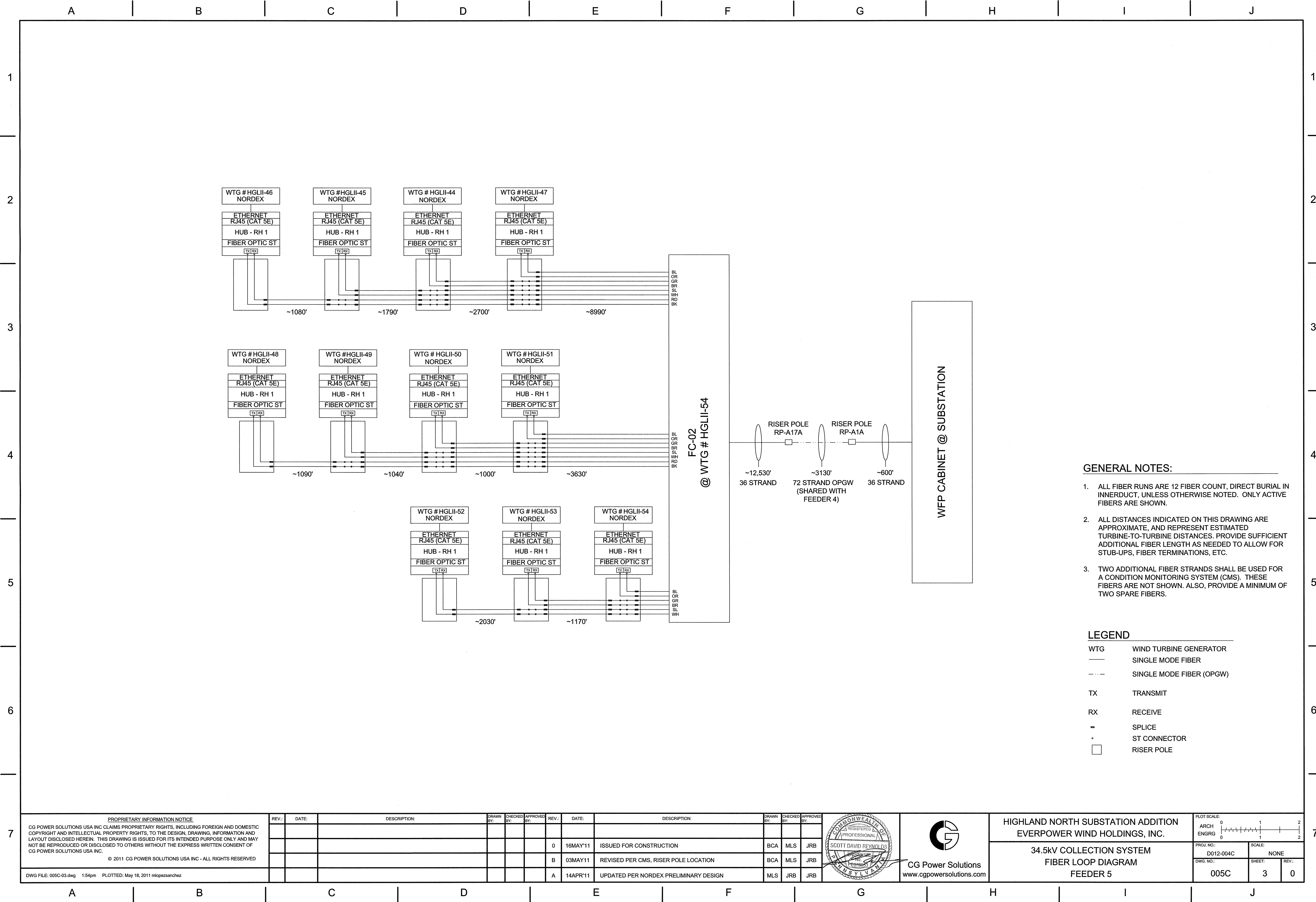
PROPRIETARY INFORMATION NOTICE
CG POWER SOLUTIONS USA INC CLAIMS PROPRIETARY RIGHTS, INCLUDING FOREIGN AND DOMESTIC COPYRIGHT AND INTELLECTUAL PROPERTY RIGHTS, TO THE DESIGN, DRAWING, INFORMATION AND LAYOUT DISCLOSED HEREIN. THIS DRAWING IS ISSUED FOR ITS INTENDED PURPOSE ONLY AND MAY NOT BE REPRODUCED OR DISCLOSED TO OTHERS WITHOUT THE EXPRESS WRITTEN CONSENT OF CG POWER SOLUTIONS USA INC.
© 2011 CG POWER SOLUTIONS USA INC - ALL RIGHTS RESERVED

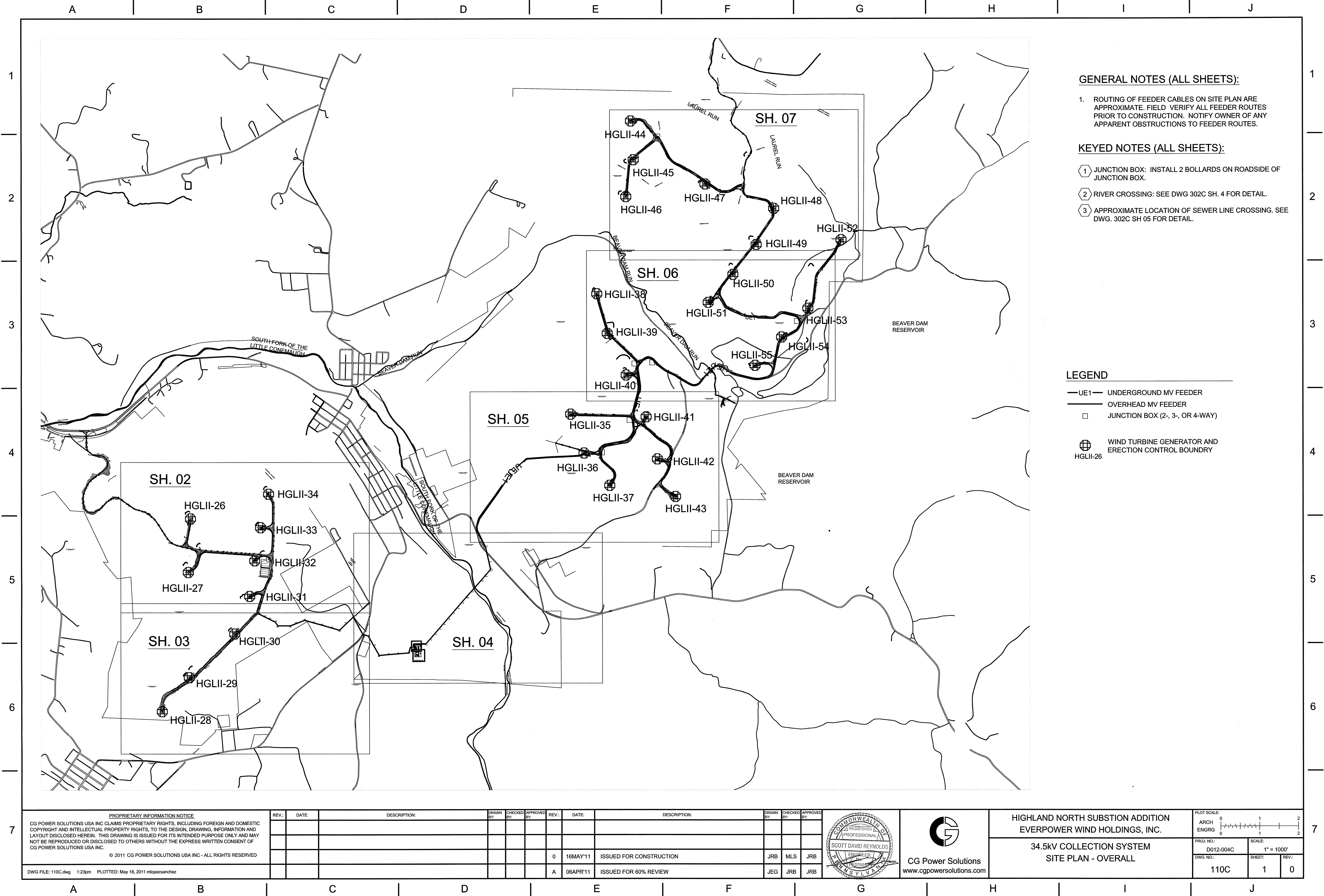
REV.	DATE	DESCRIPTION	DRAWN BY	CHECKED BY	APPROVED BY	REV.	DATE	DESCRIPTION	DRAWN BY	CHECKED BY	APPROVED BY
0	16MAY'11	ISSUED FOR CONSTRUCTION	BCA	MLS	JRB	C	03MAY'11	REVISED PER CMS, RISER POLE LOCATION	BCA	MLS	JRB
B	14APR'11	UPDATED PER NORDEX PRELIMINARY DESIGN	MLS	JRB	JRB	A	04MAR'11	ISSUED FOR 30% REVIEW	JEG	JRB	JRB

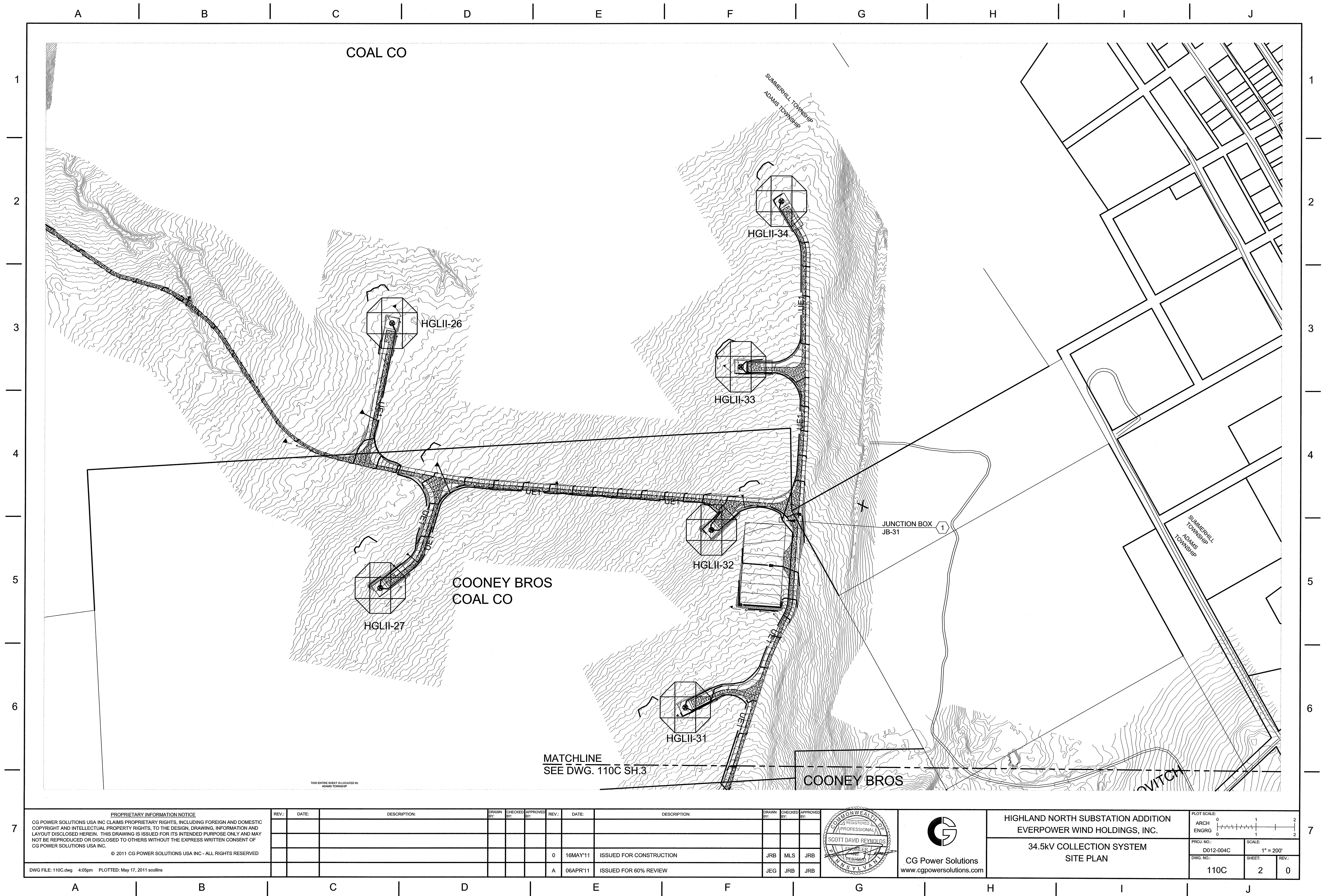


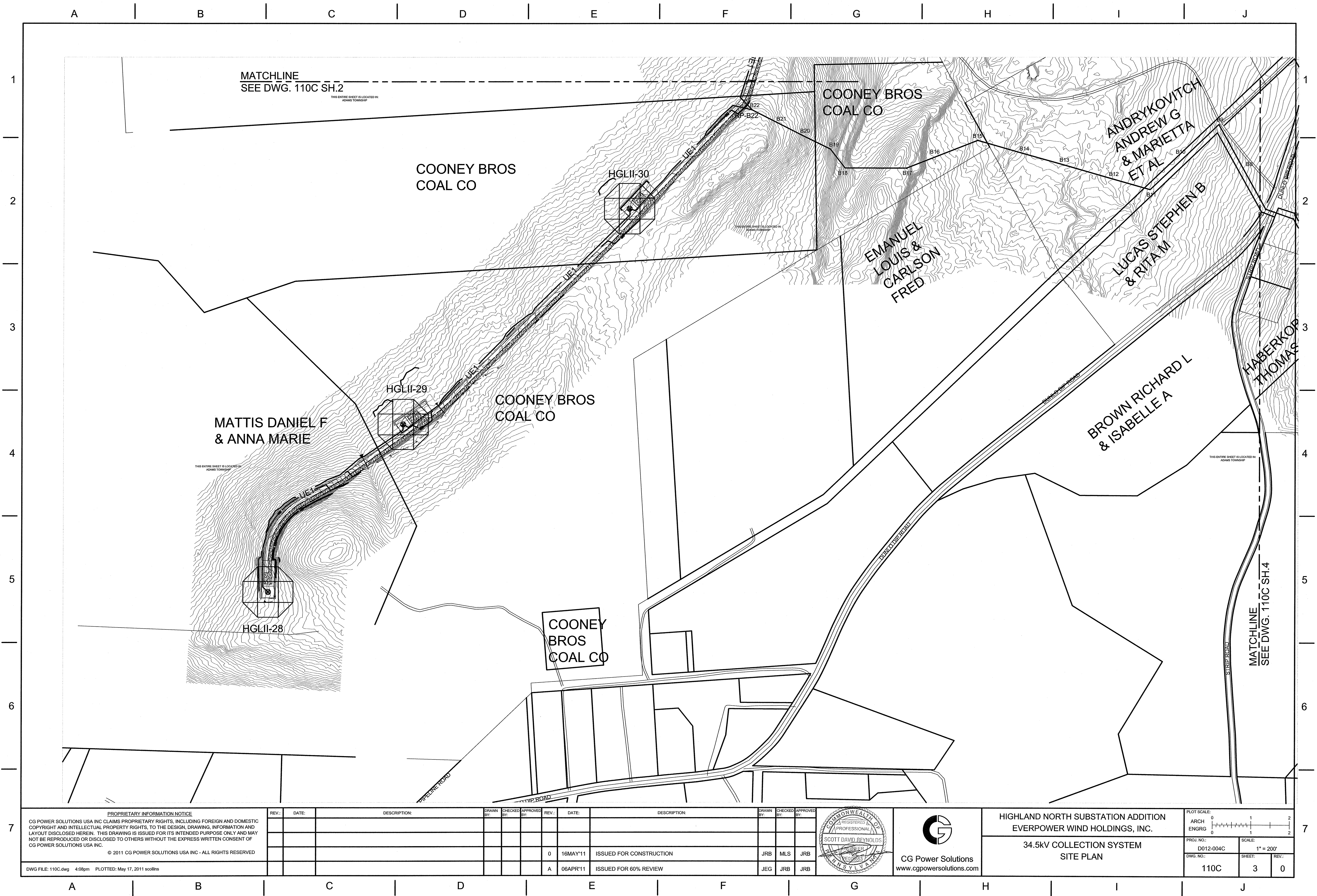
HIGHLAND NORTH SUBSTATION ADDITION
EVERPOWER WIND HOLDINGS, INC.
34.5kV COLLECTION SYSTEM
FIBER LOOP DIAGRAM
FEEDER 4

PLOT SCALE: ARCH ENGRG 0 1 2	PROJ. NO.: D012-004C	SCALE: NONE
DWG. NO.: 005C	SHEET: 2	REV.: 0





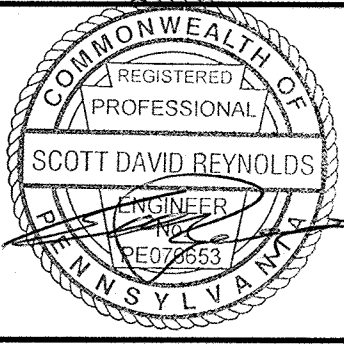




PROPRIETARY INFORMATION NOTICE
CG POWER SOLUTIONS USA INC CLAIMS PROPRIETARY RIGHTS, INCLUDING FOREIGN AND DOMESTIC COPYRIGHT AND INTELLECTUAL PROPERTY RIGHTS, TO THE DESIGN, DRAWING, INFORMATION AND LAYOUT DISCLOSED HEREIN. THIS DRAWING IS ISSUED FOR ITS INTENDED PURPOSE ONLY AND MAY NOT BE REPRODUCED OR DISCLOSED TO OTHERS WITHOUT THE EXPRESS WRITTEN CONSENT OF CG POWER SOLUTIONS USA INC.
© 2011 CG POWER SOLUTIONS USA INC - ALL RIGHTS RESERVED

DWG FILE: 110C.dwg 4:08pm PLOTTED: May 17, 2011 scollins

REV.	DATE	DESCRIPTION	DRAWN BY	CHECKED BY	APPROVED BY	REV.	DATE	DESCRIPTION	DRAWN BY	CHECKED BY	APPROVED BY
						0	16MAY'11	ISSUED FOR CONSTRUCTION	JRB	MLS	JRB
						A	06APR'11	ISSUED FOR 60% REVIEW	JEG	JRB	JRB

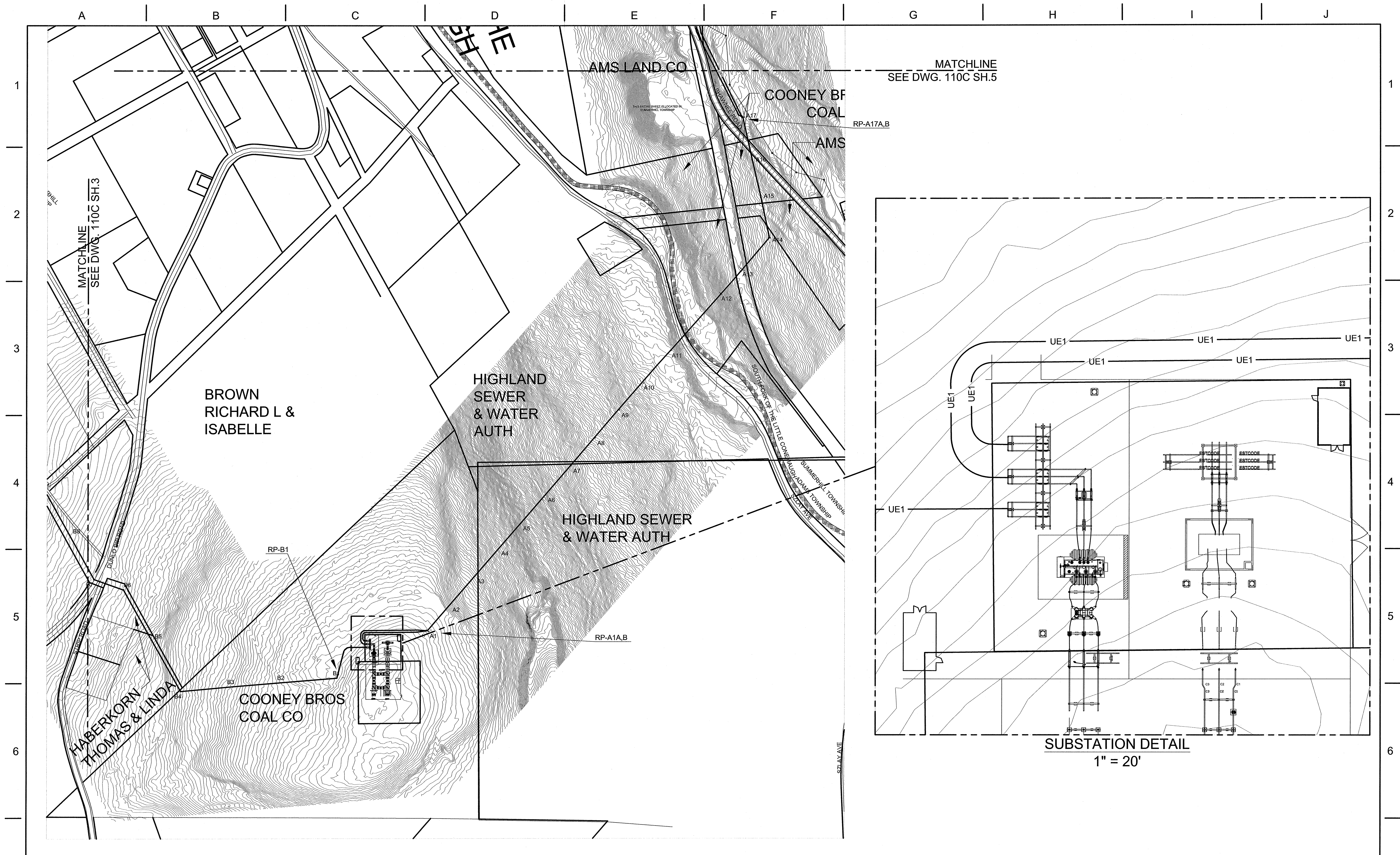



CG Power Solutions
www.cgpowersolutions.com

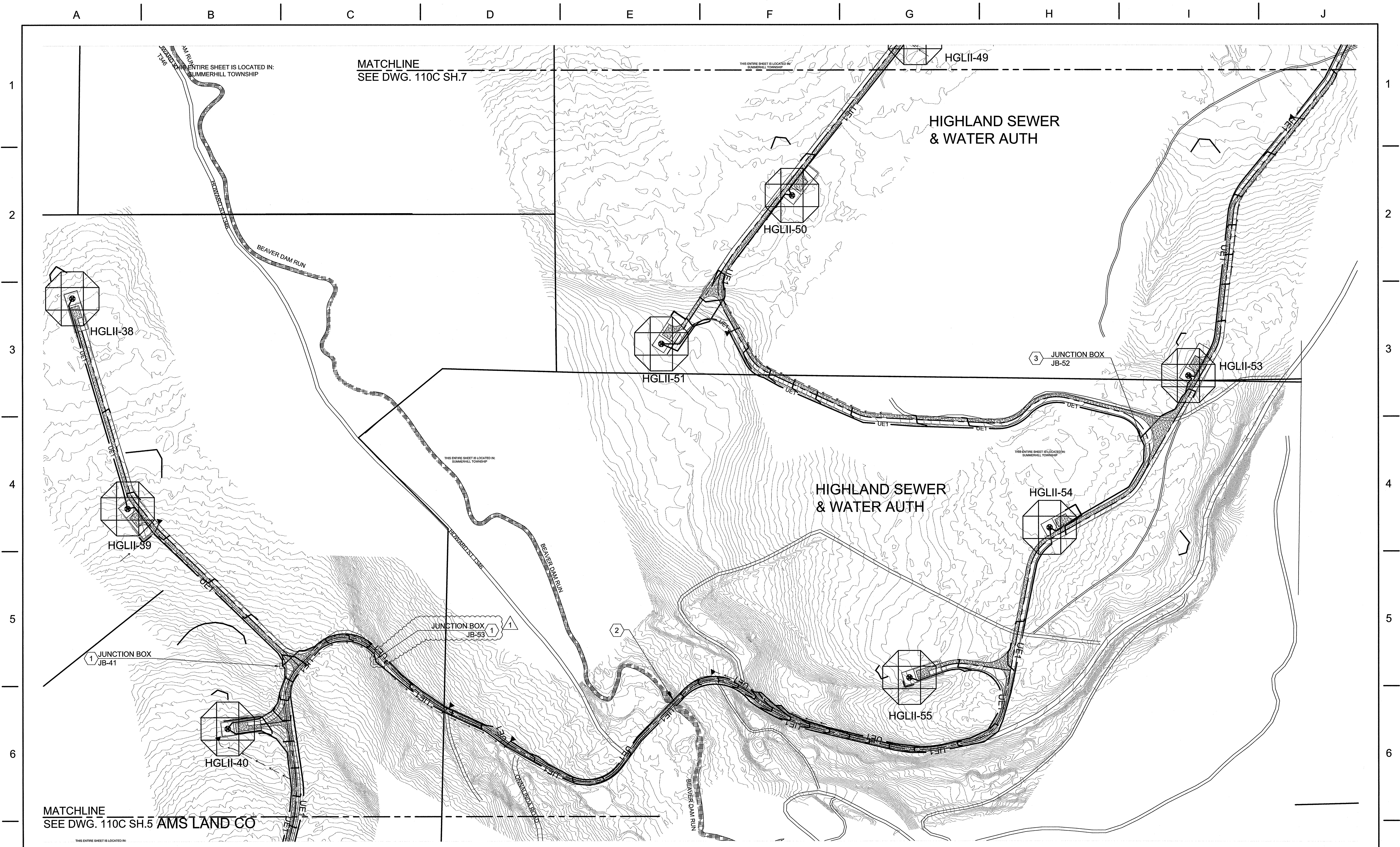
HIGHLAND NORTH SUBSTATION ADDITION
EVERPOWER WIND HOLDINGS, INC.

34.5kV COLLECTION SYSTEM
SITE PLAN

PLOT SCALE: ARCH ENGRG	0 1 2 0 1 2
PROJ. NO.: D012-004C	SCALE: 1" = 200'
DWG. NO.: 110C	SHEET: 3
	REV.: 0

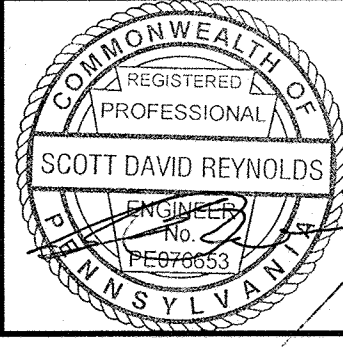


7	PROPRIETARY INFORMATION NOTICE										REV.:	DATE:	DESCRIPTION:		DRAWN BY:	CHECKED BY:	APPROVED BY:	REV.:	DATE:	DESCRIPTION:		DRAWN BY:	CHECKED BY:	APPROVED BY:	
---	--------------------------------	--	--	--	--	--	--	--	--	--	-------	-------	--------------	--	-----------	-------------	--------------	-------	-------	--------------	--	-----------	-------------	--------------	--



PROPRIETARY INFORMATION NOTICE
CG POWER SOLUTIONS USA INC CLAIMS PROPRIETARY RIGHTS, INCLUDING FOREIGN AND DOMESTIC COPYRIGHT AND INTELLECTUAL PROPERTY RIGHTS, TO THE DESIGN, DRAWING, INFORMATION AND LAYOUT DISCLOSED HEREIN. THIS DRAWING IS ISSUED FOR ITS INTENDED PURPOSE ONLY AND MAY NOT BE REPRODUCED OR DISCLOSED TO OTHERS WITHOUT THE EXPRESS WRITTEN CONSENT OF CG POWER SOLUTIONS USA INC.
© 2011 CG POWER SOLUTIONS USA INC - ALL RIGHTS RESERVED
DWG FILE: 110C.dwg 10:13am PLOTTED: May 20, 2011 jgrube

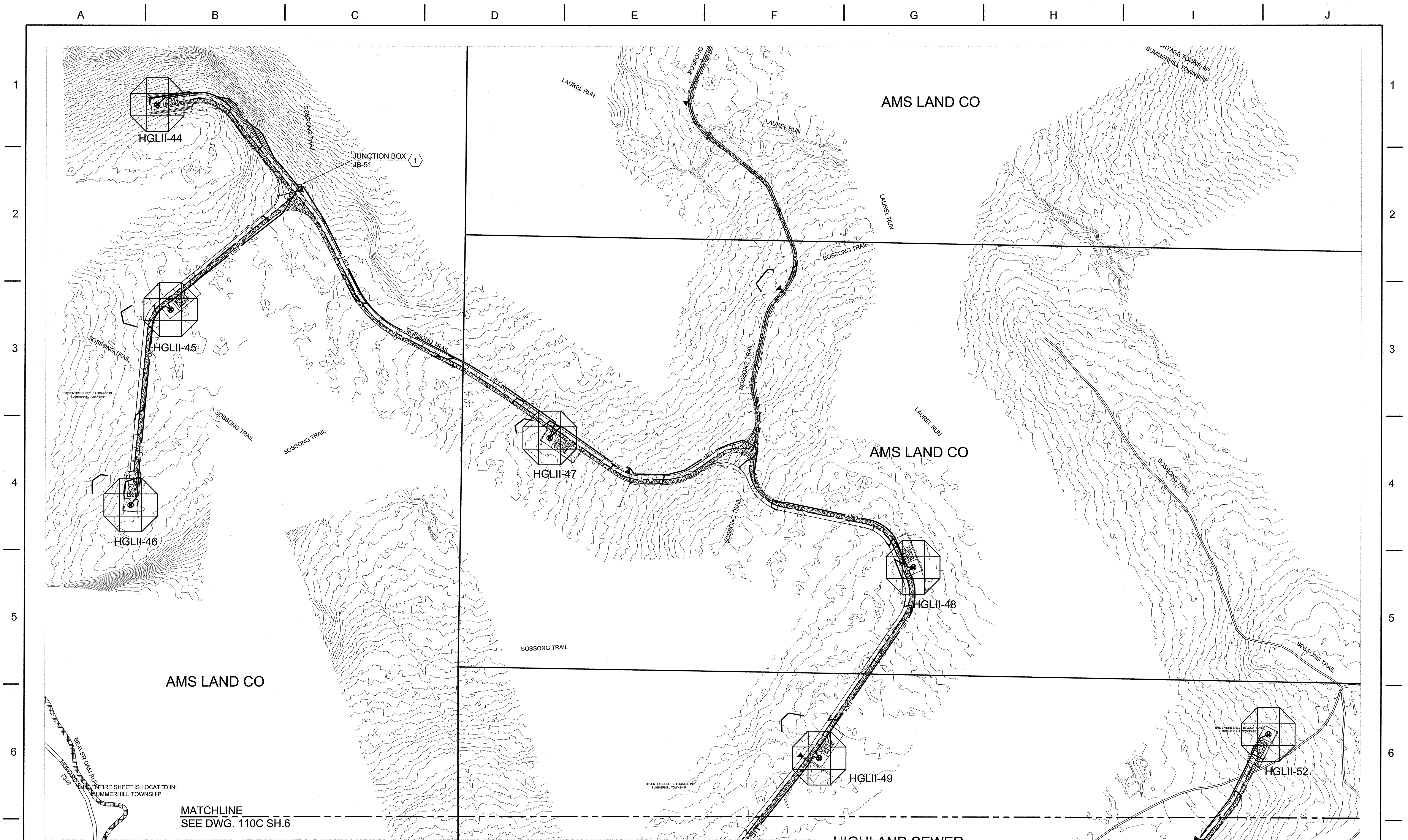
REV.	DATE:	DESCRIPTION:	DRAWN BY:	CHECKED BY:	APPROVED BY:	REV.	DATE:	DESCRIPTION:	DRAWN BY:	CHECKED BY:	APPROVED BY:
1	20MAY'11	ADDED JUNCTION BOX JB-53				1	20MAY'11	ADDED JUNCTION BOX JB-53	MLS	JRB	JRB
0	16MAY'11	ISSUED FOR CONSTRUCTION				0	16MAY'11	ISSUED FOR CONSTRUCTION	JRB	MLS	JRB
A	06APR'11	ISSUED FOR 60% REVIEW				A	06APR'11	ISSUED FOR 60% REVIEW	JEG	JRB	JRB






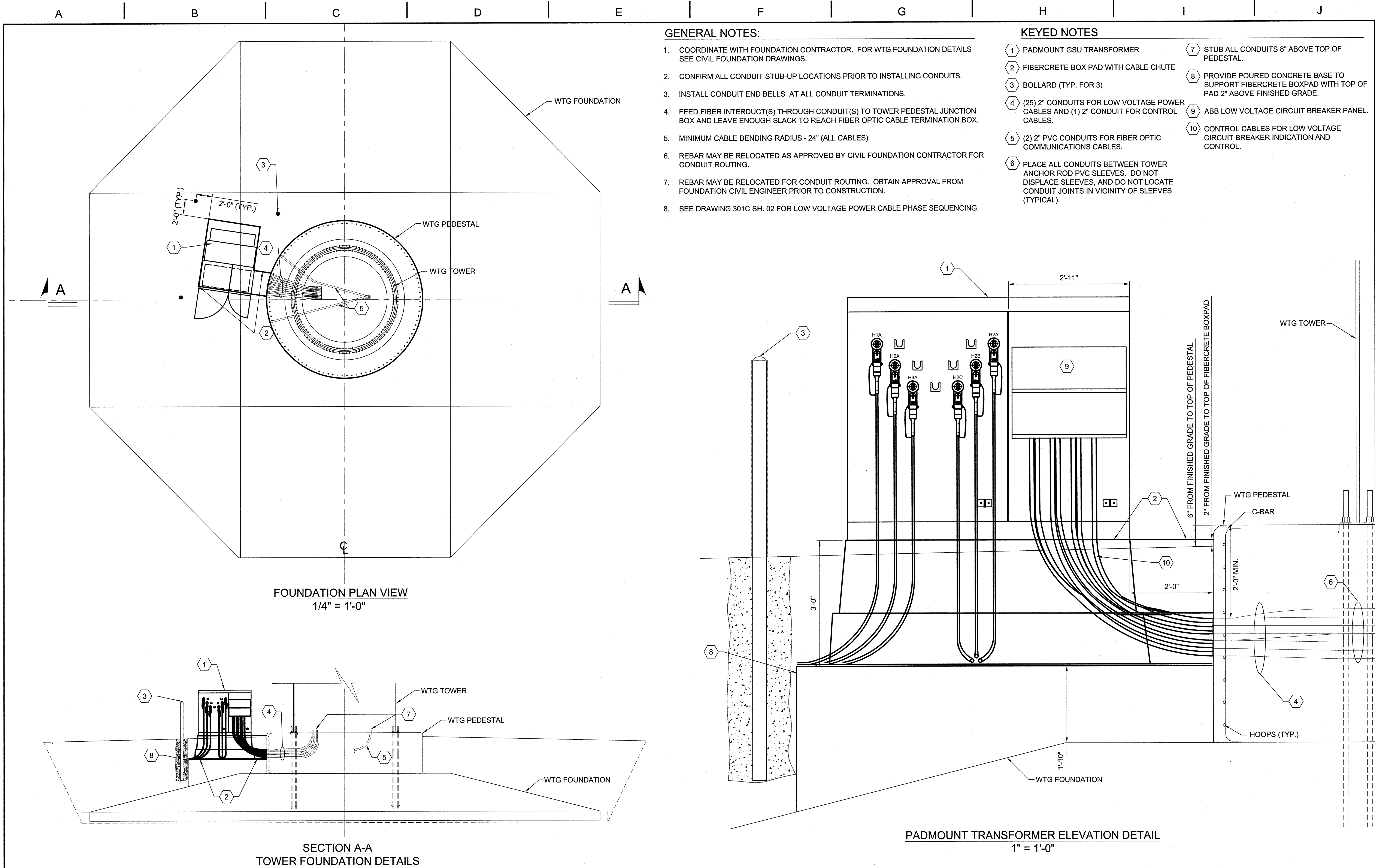

CG Power Solutions
www.cgpowersolutions.com

HIGHLAND NORTH SUBSTATION ADDITION
EVERPOWER WIND HOLDINGS INC.
34.5kV COLLECTION SYSTEM
SITE PLAN

PLOT SCALE: ARCH ENGRG 0 1 2 0 1 2	PROJ. NO.: D012-004C	SCALE: 1" = 200'
DWG. NO.: 110C	SHEET: 6	REV.: 1



7	PROPRIETARY INFORMATION NOTICE CG POWER SOLUTIONS USA INC CLAIMS PROPRIETARY RIGHTS, INCLUDING FOREIGN AND DOMESTIC COPYRIGHT AND INTELLECTUAL PROPERTY RIGHTS, TO THE DESIGN, DRAWING, INFORMATION AND LAYOUT DISCLOSED HEREIN. THIS DRAWING IS ISSUED FOR ITS INTENDED PURPOSE ONLY AND MAY NOT BE REPRODUCED OR DISCLOSED TO OTHERS WITHOUT THE EXPRESS WRITTEN CONSENT OF CG POWER SOLUTIONS USA INC. © 2011 CG POWER SOLUTIONS USA INC - ALL RIGHTS RESERVED			REV:	DATE:	DESCRIPTION:	DRAWN BY:	CHECKED BY:	APPROVED BY:	REV:	DATE:	DESCRIPTION:	DRAWN BY:	CHECKED BY:	APPROVED BY:	 CG Power Solutions www.cgpowersolutions.com		HIGHLAND NORTH SUBSTATION ADDITION EVERPOWER WIND HOLDINGS, INC.		PLOT SCALE: ARCH ENGRG 		7		
																				PROJ. NO.: D012-004C	SCALE: 1" = 200'			
										0	16MAY'11	ISSUED FOR CONSTRUCTION	JRB	MLS	JRB						DWS. NO.: 110C		SHEET: 7	REV.: 0
	DWG FILE: 110C.dwg 4:27pm PLOTTED: May 17, 2011 scollins										A	06APR'11	ISSUED FOR 60% REVIEW	JEG	JRB			JRB						



PROPRIETARY INFORMATION NOTICE CG POWER SOLUTIONS USA INC CLAIMS PROPRIETARY RIGHTS, INCLUDING FOREIGN AND DOMESTIC COPYRIGHT AND INTELLECTUAL PROPERTY RIGHTS, TO THE DESIGN, DRAWING, INFORMATION AND LAYOUT DISCLOSED HEREIN. THIS DRAWING IS ISSUED FOR ITS INTENDED PURPOSE ONLY AND MAY NOT BE REPRODUCED OR DISCLOSED TO OTHERS WITHOUT THE EXPRESS WRITTEN CONSENT OF CG POWER SOLUTIONS USA INC. © 2011 CG POWER SOLUTIONS USA INC - ALL RIGHTS RESERVED				REV.	DATE	DESCRIPTION	DRAWN BY	CHECKED BY	APPROVED BY	REV.	DATE	DESCRIPTION	DRAWN BY	CHECKED BY	APPROVED BY
										1	23MAY'11	GENERAL REVISIONS 1	JEG	JRB	MLS
										0	16MAY'11	ISSUED FOR CONSTRUCTION	JEG	JRB	JRB
										A	07APR'11	ISSUED FOR 60% REVIEW	JEG	JRB	JRB
DWG FILE: 301C-01.dwg 4:36pm PLOTTED: May 23, 2011 mlpezsanchez															

CG Power Solutions
www.cgpowersolutions.com

HIGHLAND NORTH SUBSTATION ADDITION
EVERPOWER WIND HOLDINGS, INC.

34.5KV COLLECTION SYSTEM
WTG FOUNDATION
CONDUIT/CABLE DETAILS

PLOT SCALE:
ARCH
ENGRG
0 1 2

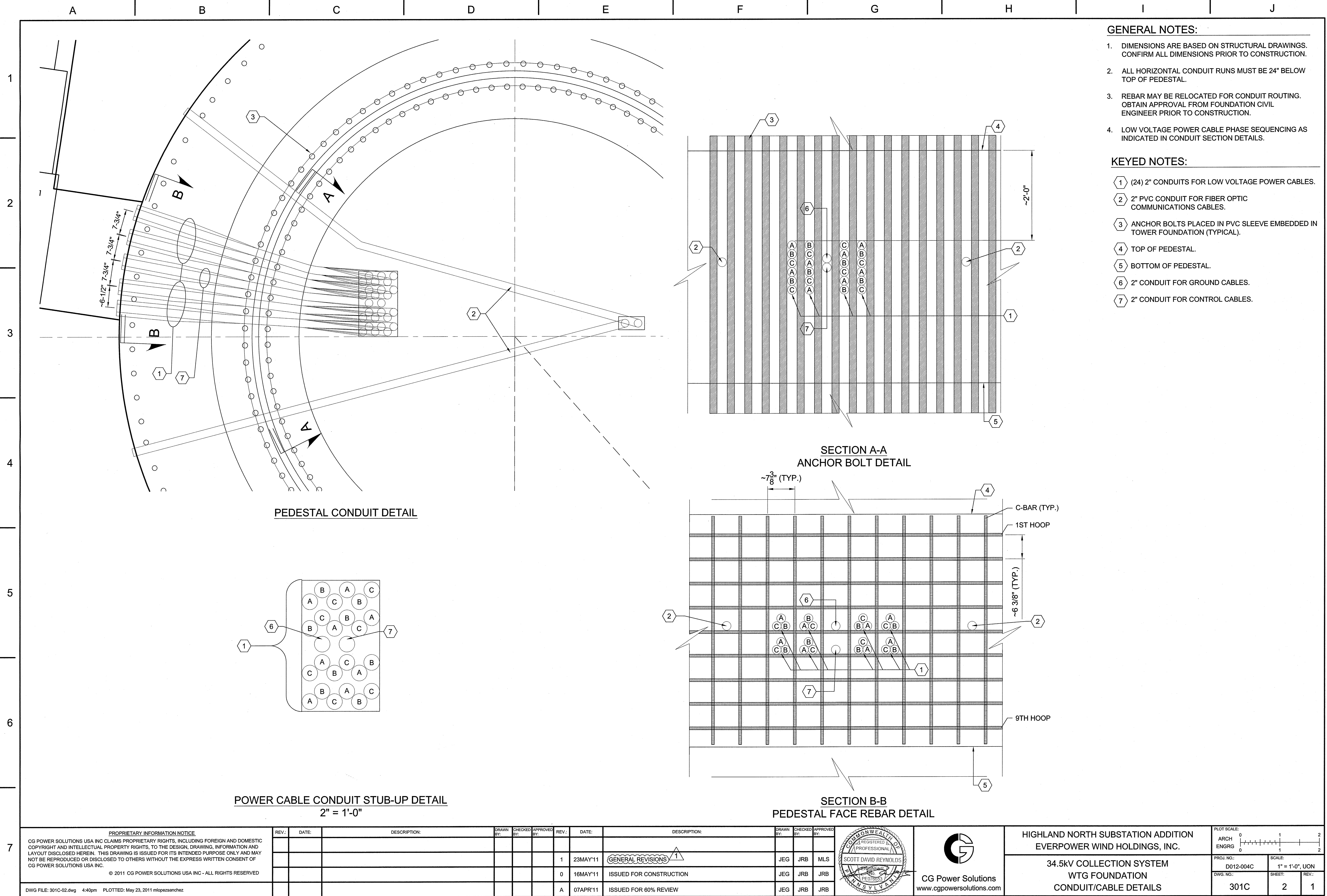
PROJ. NO.:
D012-004C

DWG. NO.:
301C

SCALE:
AS NOTED

SHEET:
1

REV.:
1



- GENERAL NOTES:**
1. DIMENSIONS ARE BASED ON STRUCTURAL DRAWINGS. CONFIRM ALL DIMENSIONS PRIOR TO CONSTRUCTION.
 2. ALL HORIZONTAL CONDUIT RUNS MUST BE 24" BELOW TOP OF PEDESTAL.
 3. REBAR MAY BE RELOCATED FOR CONDUIT ROUTING. OBTAIN APPROVAL FROM FOUNDATION CIVIL ENGINEER PRIOR TO CONSTRUCTION.
 4. LOW VOLTAGE POWER CABLE PHASE SEQUENCING AS INDICATED IN CONDUIT SECTION DETAILS.

- KEYED NOTES:**
- 1 (24) 2" CONDUITS FOR LOW VOLTAGE POWER CABLES.
 - 2 2" PVC CONDUIT FOR FIBER OPTIC COMMUNICATIONS CABLES.
 - 3 ANCHOR BOLTS PLACED IN PVC SLEEVE EMBEDDED IN TOWER FOUNDATION (TYPICAL).
 - 4 TOP OF PEDESTAL.
 - 5 BOTTOM OF PEDESTAL.
 - 6 2" CONDUIT FOR GROUND CABLES.
 - 7 2" CONDUIT FOR CONTROL CABLES.

PEDESTAL CONDUIT DETAIL

SECTION A-A
ANCHOR BOLT DETAIL

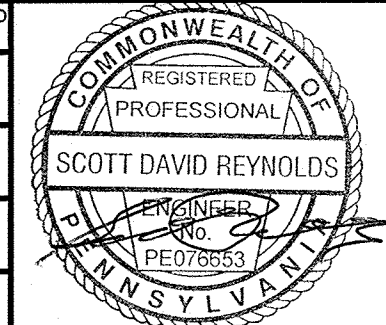
SECTION B-B
PEDESTAL FACE REBAR DETAIL

POWER CABLE CONDUIT STUB-UP DETAIL
2" = 1'-0"

PROPRIETARY INFORMATION NOTICE
CG POWER SOLUTIONS USA INC CLAIMS PROPRIETARY RIGHTS, INCLUDING FOREIGN AND DOMESTIC COPYRIGHT AND INTELLECTUAL PROPERTY RIGHTS, TO THE DESIGN, DRAWING, INFORMATION AND LAYOUT DISCLOSED HEREIN. THIS DRAWING IS ISSUED FOR ITS INTENDED PURPOSE ONLY AND MAY NOT BE REPRODUCED OR DISCLOSED TO OTHERS WITHOUT THE EXPRESS WRITTEN CONSENT OF CG POWER SOLUTIONS USA INC.

DWG FILE: 301C-02.dwg 4:40pm PLOTTED: May 23, 2011 mlpezsanchez

REV.	DATE	DESCRIPTION	DRAWN BY	CHECKED BY	APPROVED BY	REV.	DATE	DESCRIPTION	DRAWN BY	CHECKED BY	APPROVED BY
1	23MAY'11	GENERAL REVISIONS	JEG	JRB	MLS						
0	16MAY'11	ISSUED FOR CONSTRUCTION	JEG	JRB	JRB						
A	07APR'11	ISSUED FOR 60% REVIEW	JEG	JRB	JRB						

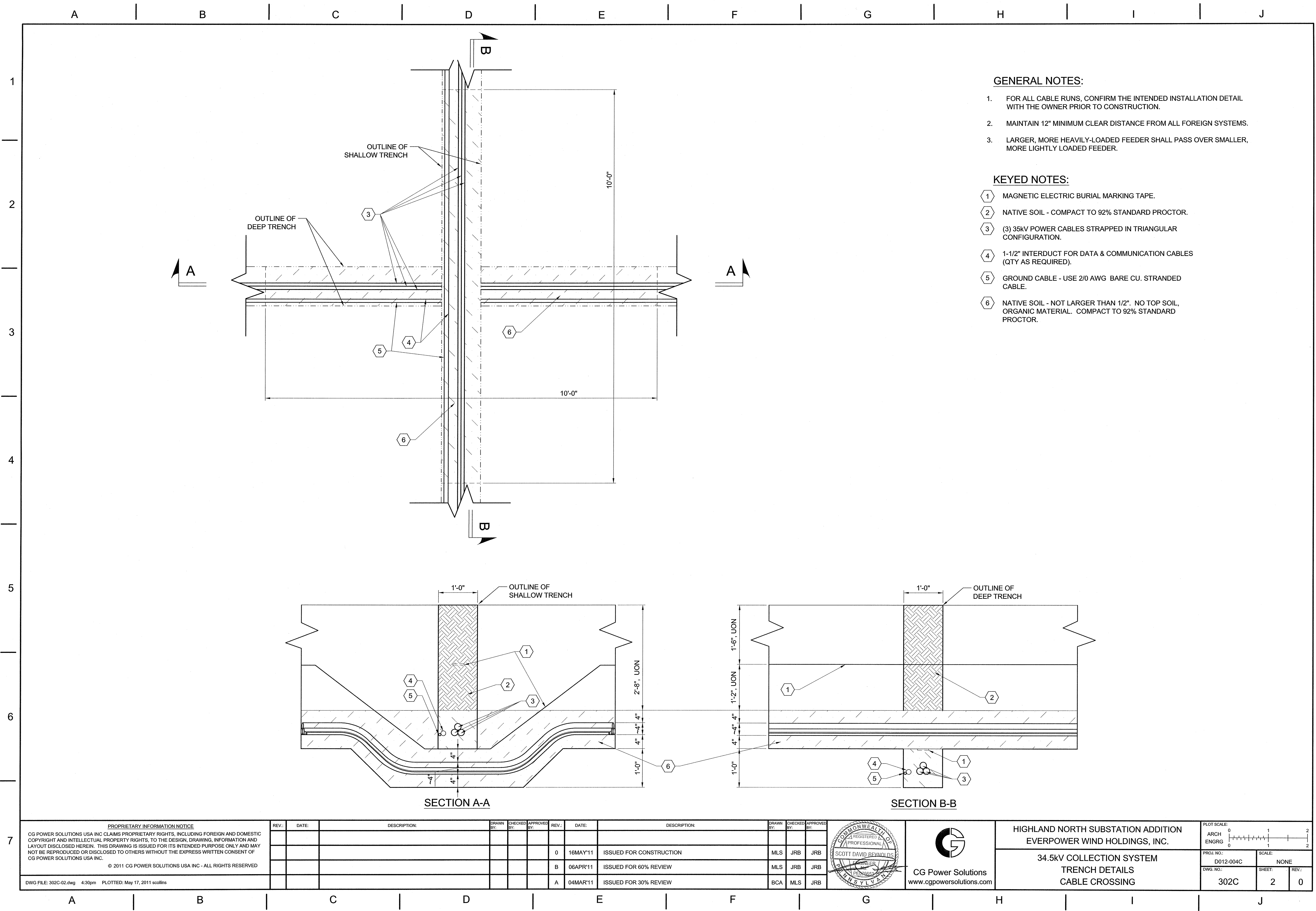


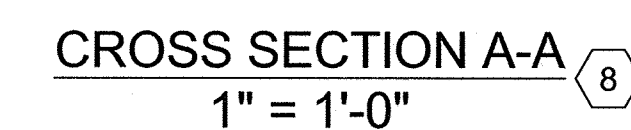
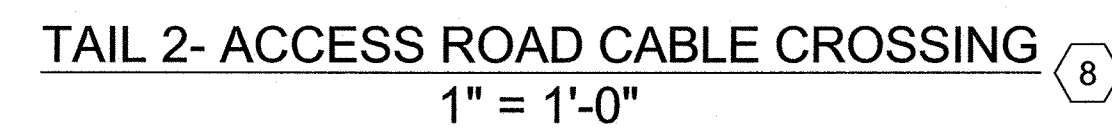
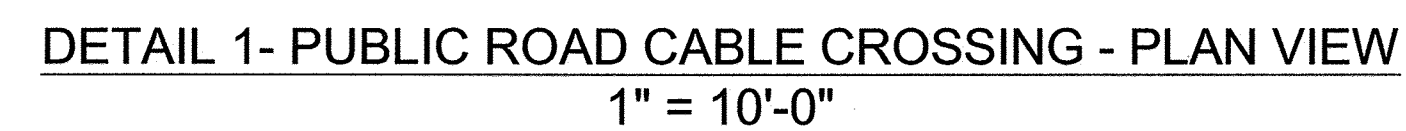
CG Power Solutions
www.cgpowersolutions.com

HIGHLAND NORTH SUBSTATION ADDITION
EVERPOWER WIND HOLDINGS, INC.

34.5KV COLLECTION SYSTEM
WTG FOUNDATION
CONDUIT/CABLE DETAILS

PLOT SCALE:	ARCH	ENGRG	SCALE:	1" = 1'-0", UON
0 1 2	0 1 2	0 1 2	D012-004C	
PROJ. NO.:	DWG. NO.:	SHEET:	REV.:	
301C	2	1		

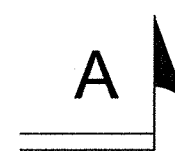




1. PIT FOR DIRECTIONAL DRILLING, JACKING, RAMMING, OR BORING.
2. RECEIVING PIT.
3. PROVIDE SEPARATE 8" HDPE CONDUIT FOR EACH FEEDER CROSSING THE ROADWAY. MAINTAIN MINIMUM 10' SPACING BETWEEN PARALLEL CROSSING CONDUITS.
4. INSTALL CONDUITS UNDER PUBLIC ROADWAYS AT A MINIMUM DEPTH OF 5'. INSTALL AT GREATER DEPTH AS DIRECTED OR REQUIRED. VERIFY ACTUAL REQUIREMENTS OF LOCAL/COUNTY/STATE DOT IN ADVANCE OF CONSTRUCTION.
5. AFTER INSTALLATION OF CABLES IN CONDUIT, FILL CONDUIT WITH BENTONITE SLURRY.
6. ACCESS ROAD BASE MATERIAL
7. MAGNETIC ELECTRICAL BURIAL TAPE.
8. SEE DWG. 302C SH.01 FOR TYPICAL PLACEMENT OF TRWCH ELEMENTS AND BACKFILL REQUIREMENTS.

DWG FILE: 302C-03.dwg 4:30pm PLOTTED: May 17, 2011 scollins

A	B	C	D	E	F	G	H	I	J
---	---	---	---	---	---	---	---	---	---



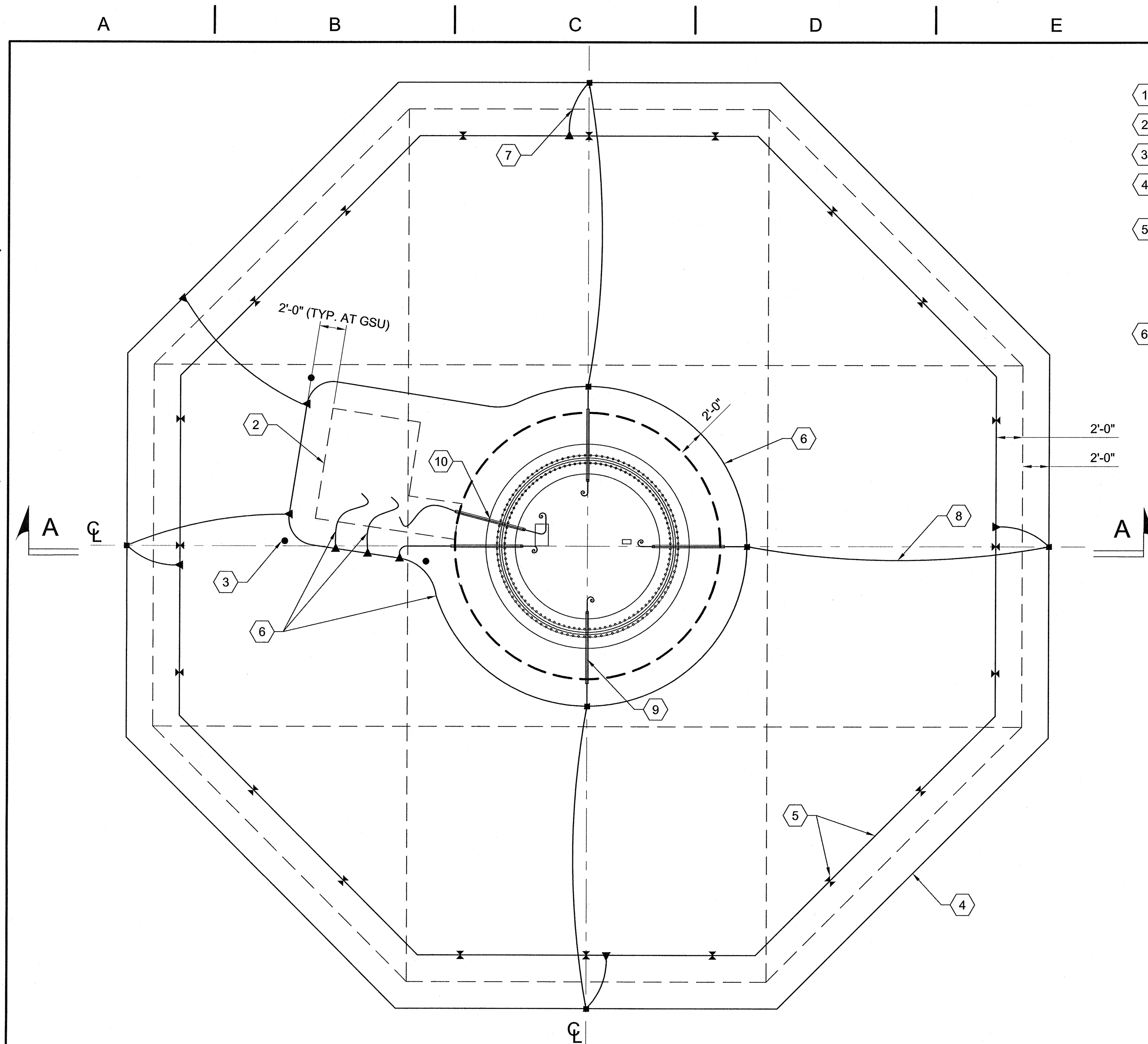
SECTION A-A

- DWG FILE: 302C-05.dwg 4:32pm PLOTTED: May 17, 2011 scollins

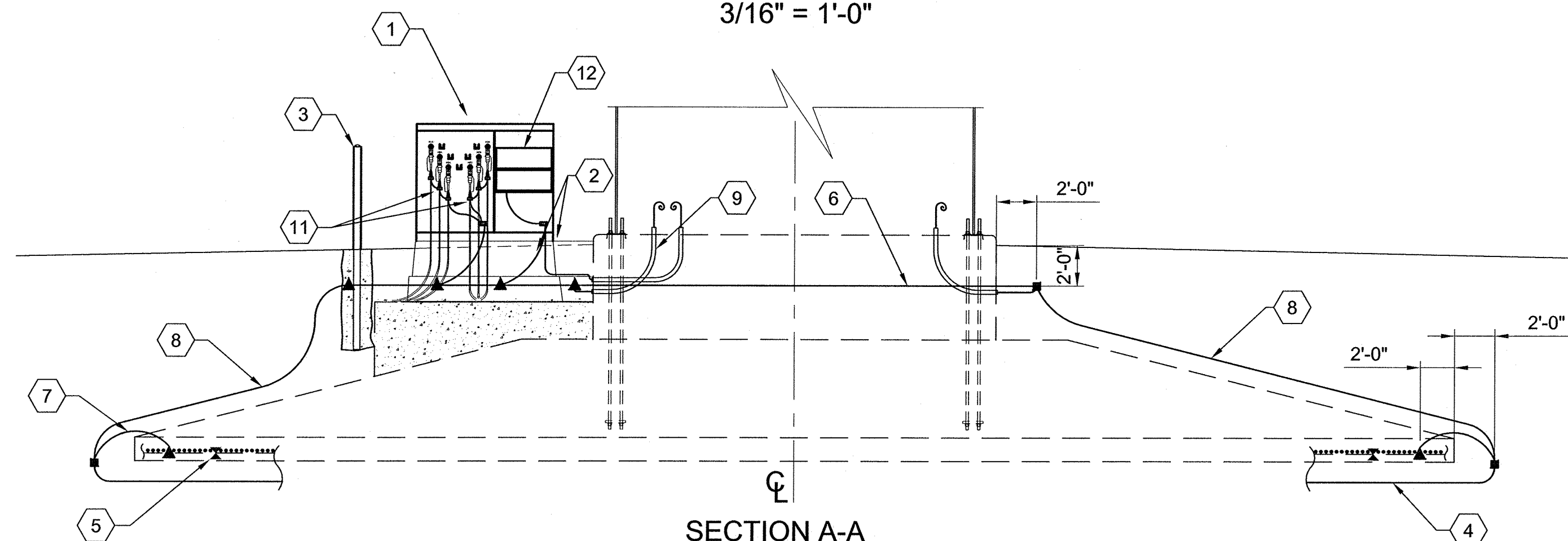


DETAIL 1 - TYPICAL JUNCTION BOX

- DWG FILE: 303C.dwg 9:17am PLOTTED: May 25, 2011 jgrube



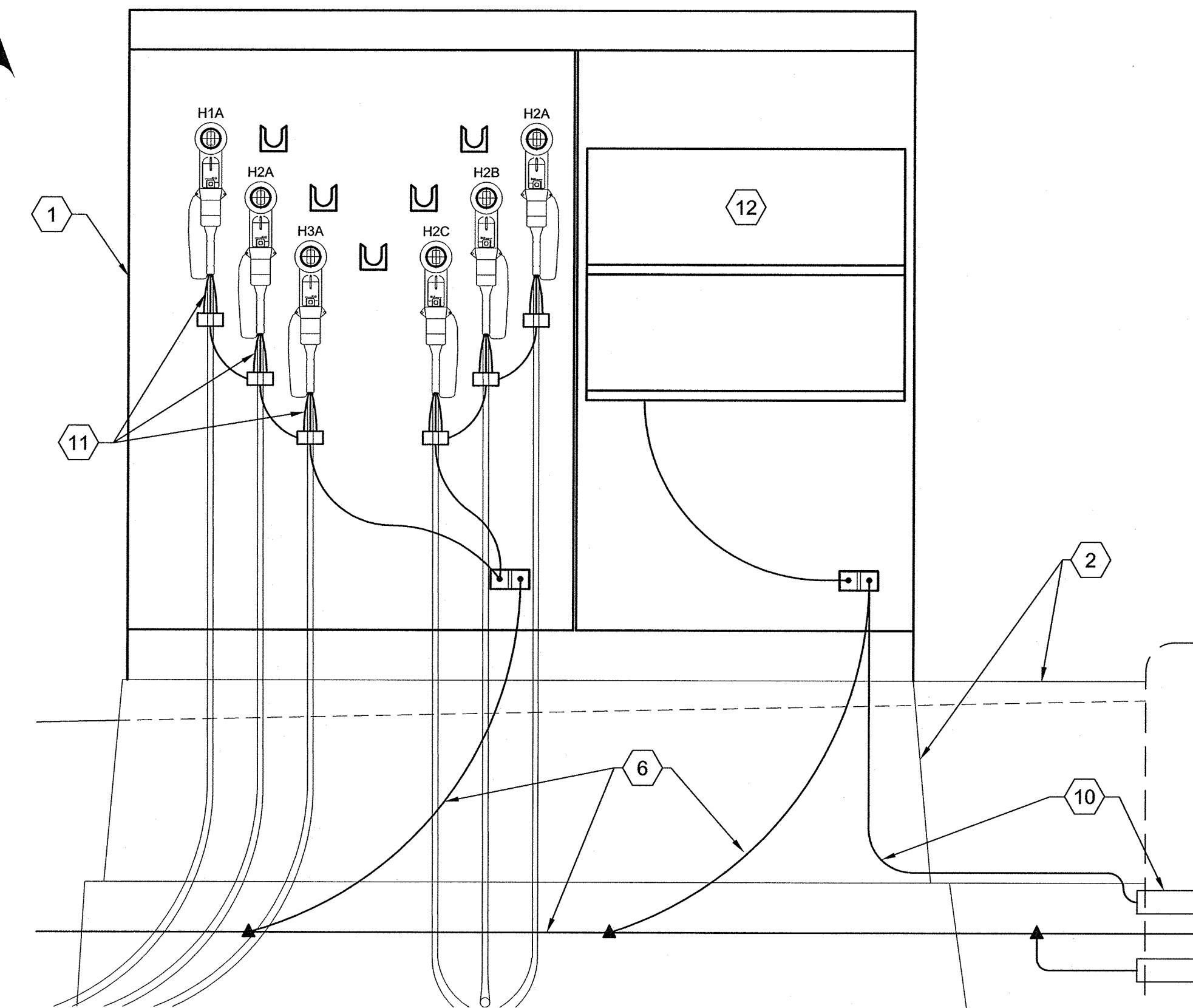
FOUNDATION PLAN VIEW
3/16" = 1'-0"



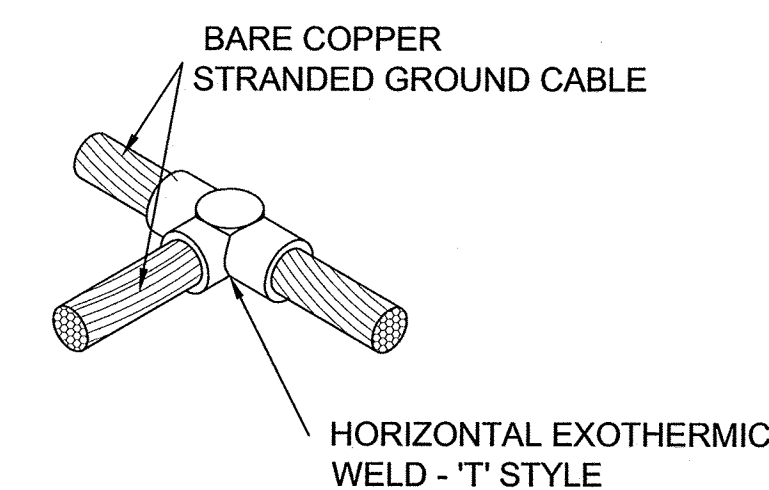
SECTION A-A
TOWER FOUNDATION DETAILS

KEYED NOTES:

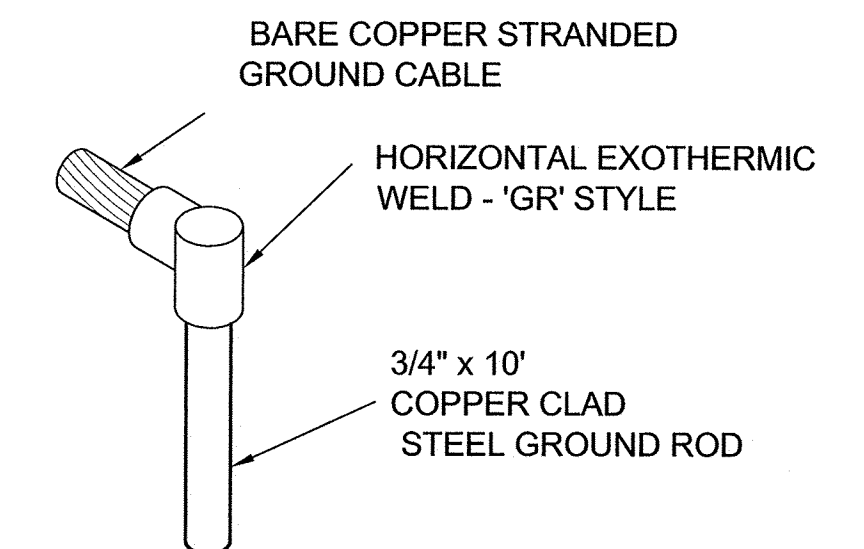
- 1 PADMOUNT GSU TRANSFORMER.
- 2 FIBERCRETE BOX PAD WITH CABLE CHUTE.
- 3 PVC BOLLARD (TYP. FOR 3).
- 4 OUTER GROUNDING RING LOCATED OUTSIDE FOUNDATION AT BOTTOM OF EXCAVATION.
- 5 FOUNDATION GROUNDING RING LOCATED INSIDE FOUNDATION LYING ON TOP OF THE BOTTOM LAYER OF STEEL REINFORCEMENT. PROVIDE BOLTED CONNECTIONS TO STEEL REINFORCEMENT AT 20 LOCATIONS SPACED EVENLY AROUND FOUNDATION PERIMETER AS SHOWN.
- 6 INNER GROUNDING RING LOCATED OUTSIDE PEDESTAL AND AROUND FIBERCRETE BOX PAD LOCATED 24" BELOW FINISHED GRADE. PROVIDE (2) GROUNDING CABLE PIGTAILS THROUGH TRANSFORMER WINDOW TO TRANSFORMER GROUND LUGS.
- 7 GROUNDING CABLE CONNECTING OUTER GROUNDING RING AND FOUNDATION GROUNDING RING (TYPICAL FOR 4).
- 8 GROUNDING CABLE CONNECTING OUTER GROUNDING RING AND INNER GROUNDING RING (TYPICAL FOR 5).
- 9 GROUNDING CABLE CONNECTING INNER GROUNDING RING TO WTG TOWER IN 2" CONDUIT (TYPICAL FOR 4).
- 10 GROUNDING CABLE CONNECTING PADMOUNT TRANSFORMER L.V. GROUND TERMINAL TO WTG IN 2" CONDUIT.
- 11 BOND MV CABLE SHIELD WIRES TO GROUND TERMINAL IN 35kV COMPARTMENT.
- 12 ABB LOW VOLTAGE BREAKER PANEL.



TRANSFORMER GROUNDING DETAIL
(NOT TO SCALE)



'X' STYLE EXOTHERMIC WELD SIMILAR
GRID CABLE CONNECTION



GROUND ROD/GRID CONNECTION

GENERAL NOTES:

1. FOR WTG FOUNDATION DETAILS SEE CIVIL FOUNDATION DRAWINGS.
2. WHEN PLACING THE CONDUIT THROUGH FOUNDATION WALL, CONDUIT SHALL BE BENT AROUND ANCHOR BOLTS AND REBAR.
3. INSTALL TEMPORARY CAPS ON ALL CONDUIT ENDS.
4. TERMINATE ALL CONDUITS WITH BELL ENDS.
5. ALL CONNECTIONS BONDING TWO OR MORE GROUNDING CABLES TOGETHER SHALL BE EXOTHERMIC WELDED, UNLESS INDICATED OTHERWISE.
6. DO NOT MAKE CAD WELDING CONNECTIONS TO CONCRETE REINFORCING STEEL. ALL CONNECTIONS BETWEEN GROUNDING CABLES AND FOUNDATION REINFORCING STEEL SHALL BE BOLTED CONNECTIONS.
7. GROUND GRID TESTING: TEST THE TURBINE GROUND GRID IN ISOLATION FROM THE COLLECTION SYSTEM GROUNDING COMPONENTS AS FOLLOWS:
 - A. INSTALL ALL TURBINE GROUND GRID COMPONENTS SHOWN ON THIS DRAWING, EXCEPT DO NOT CONNECT THE GROUNDING COMPONENTS ASSOCIATED WITH THE COLLECTION SYSTEM (GROUND CABLE, 35kV CABLE NEUTRAL CONDUCTORS).
 - B. TEST AND DOCUMENT THE RESISTANCE OF THE TURBINE GROUND GRID. IF THE VALUE IS ACCEPTABLE, THEN CONNECT THE TURBINE GROUND GRID TO THE COLLECTION SYSTEM GROUNDING COMPONENTS. IF THE VALUE IS NOT ACCEPTABLE, CONTACT THE TURBINE MANUFACTURER AND REQUEST THEIR ADVICE. FOLLOW THEIR RECOMMENDATIONS TO REDUCE THE GROUND GRID RESISTANCE TO A VALUE THAT THEY DETERMINE TO BE ACCEPTABLE.

GROUNDING LEGEND

- WTG FOUNDATION OUTLINE, UON
- GROUND GRID CONDUCTOR
- 4/0 AWG, BARE COPPER (UNLESS OTHERWISE NOTED).
- ▲ EXOTHERMIC CONNECTION ("T"), (SEE TYPICAL DETAIL, ON THIS SHEET).
- EXOTHERMIC CONNECTION ("X"), (SEE TYPICAL DETAIL, ON THIS SHEET).
- ✕ BOLTED CONNECTION TO TURBINE TOWER FOUNDATION REINFORCING STEEL.
- BOLTED CONNECTION TO FLANGE OR BOLLARD.
- 4/0 AWG BARE COPPER TAIL (UNLESS OTHERWISE NOTED).
- ⊕ GROUND ROD & CONNECTION TO MAIN GROUND GRID. (SEE TYP. DETAILS ON THIS SHEET)

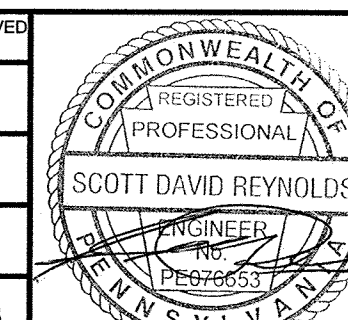
PROPRIETARY INFORMATION NOTICE

CG POWER SOLUTIONS USA INC CLAIMS PROPRIETARY RIGHTS, INCLUDING FOREIGN AND DOMESTIC COPYRIGHT AND INTELLECTUAL PROPERTY RIGHTS, TO THE DESIGN, DRAWING, INFORMATION AND LAYOUT DISCLOSED HEREIN. THIS DRAWING IS ISSUED FOR ITS INTENDED PURPOSE ONLY AND MAY NOT BE REPRODUCED OR DISCLOSED TO OTHERS WITHOUT THE EXPRESS WRITTEN CONSENT OF CG POWER SOLUTIONS USA INC.

© 2011 CG POWER SOLUTIONS USA INC - ALL RIGHTS RESERVED

DWG FILE: 401C-01.dwg 4:33pm PLOTTED: May 17, 2011 scollins

REV.	DATE	DESCRIPTION	DRAWN BY	CHECKED BY	APPROVED BY	REV.	DATE	DESCRIPTION	DRAWN BY	CHECKED BY	APPROVED BY
0	16MAY'11	ISSUED FOR CONSTRUCTION	BCA	JRB	JRB						



HIGHLAND NORTH SUBSTATION ADDITION
EVERPOWER WIND HOLDINGS, INC.

34.5kV COLLECTION SYSTEM
TURBINE GROUNDING PLAN & DETAILS

PLOT SCALE: ARCH ENGRG	1 2
PROJ. NO.: D012-004C	SCALE: AS NOTED
DWG. NO.: 401C	SHEET: 1
	REV.: 0